



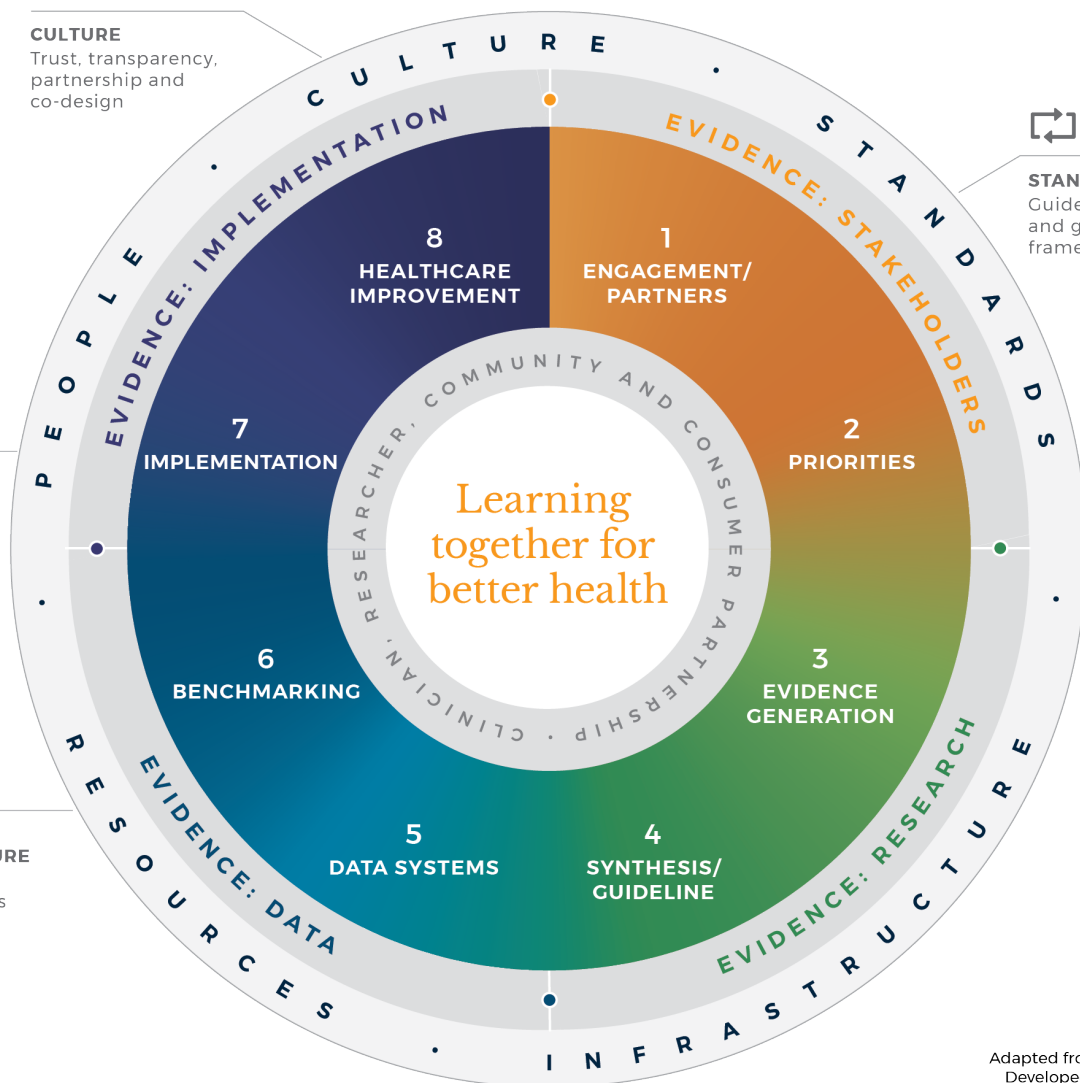
CULTURE
Trust, transparency,
partnership and
co-design



PEOPLE
All those that
contribute to a
healthy LHS



**RESOURCES /
INFRASTRUCTURE**
Access, linkage,
storage, analysis
and application



STANDARDS
Guides to processes
and governance
frameworks

STAKEHOLDER DERIVED EVIDENCE

1 ENGAGEMENT OF PEOPLE

- Consult
- Engage
- Involve
- Collaborate
- Empower
- Inform

2 IDENTIFYING PRIORITIES

- Formal engagement
- Agreed priorities
- Ranked priorities
- Prioritised outcome measures

RESEARCH DERIVED EVIDENCE

3 EVIDENCE BASED INFORMATION

- Cohort trials
- Economic analysis
- Epidemiology based information
- Existing guidelines, standards, policies Qualitative and Quantitative research
- Randomised and pragmatic clinical trials

4 EVIDENCE SYNTHESIS AND GUIDELINES

- Systematic reviews
- Meta- analysis: aggregate and individual data
- Secondary research
- Consideration of stakeholder and evidence based priorities

DATA DERIVED EVIDENCE

5 DATA AND INFORMATION SYSTEMS

- Data from health care and other sources
- Patient reported experience measures
- Patient reported outcome measures
- Complies with the 5 safes*
- Compliant with FAIR data principles**
- Linkage, analysis and interpretation
- Big data analytics, machine learning
- Technology and infrastructure
- Quality, timely, meaningful and actionable data

6 BENCHMARKING

- Advocacy and transparency
- Adjustments for service variation
- Real time visual representation at individual, service and organisational levels
- Measurement to iteratively and continuously drive improvement
- Evaluation
- Learning feedback

DATA DERIVED EVIDENCE

7 IMPLEMENTATION

- Leadership
- Theory driven
- Economically sound
- Methodologically rigorous
- Addressing barriers and enablers
- Capability in change management
- Consideration of the Burden of data collection
- Sustainable and scalable
- Demonstrating healthcare improvement

8 HEALTHCARE IMPROVEMENT

- Leadership
- Pragmatism
- Contextual/ local
- Outcome improvement
- Quality improvement
- Change management
- Evaluation

*Five Safes: Safe Projects, People, Settings, Data and Outputs

** FAIR data principles: Findable, Accessible, Interoperable and Reusable